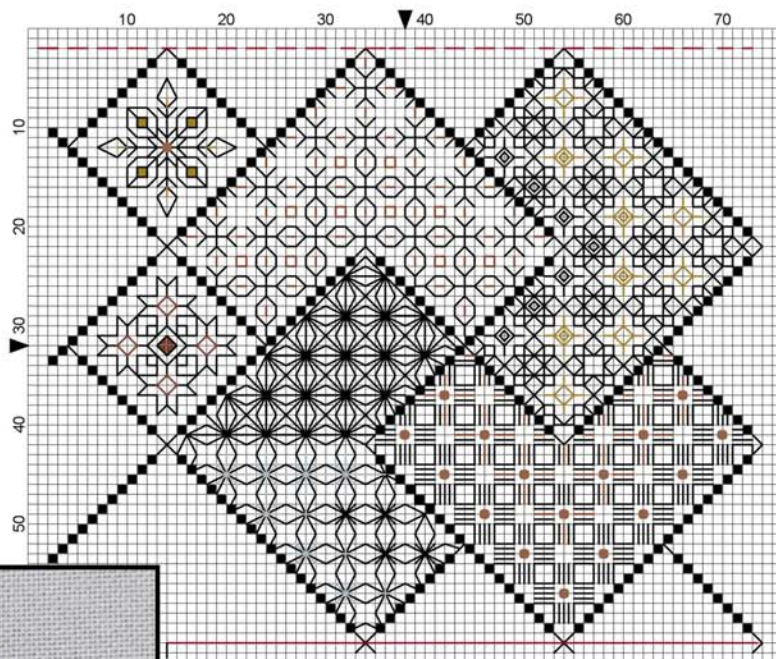


SAVE THE STITCHES

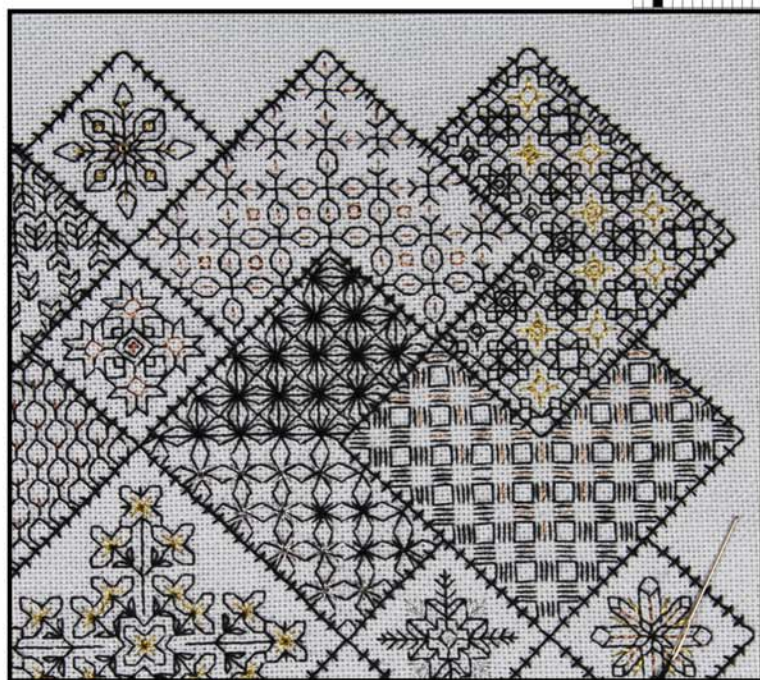
Blackwork Journey - Designs by Elizabeth Almond

Block 3 Patterns 11- 16

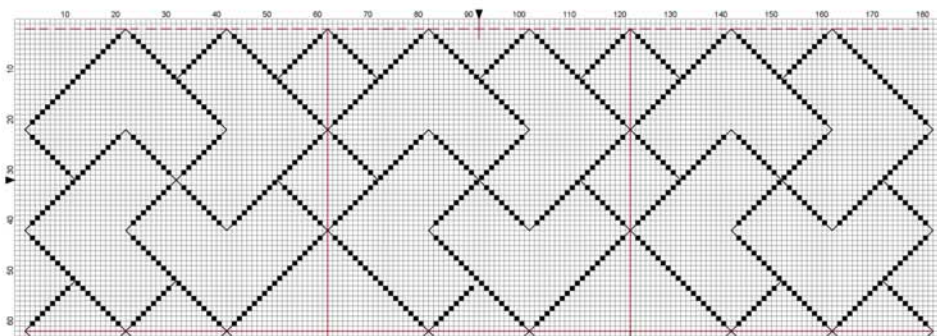
Chart



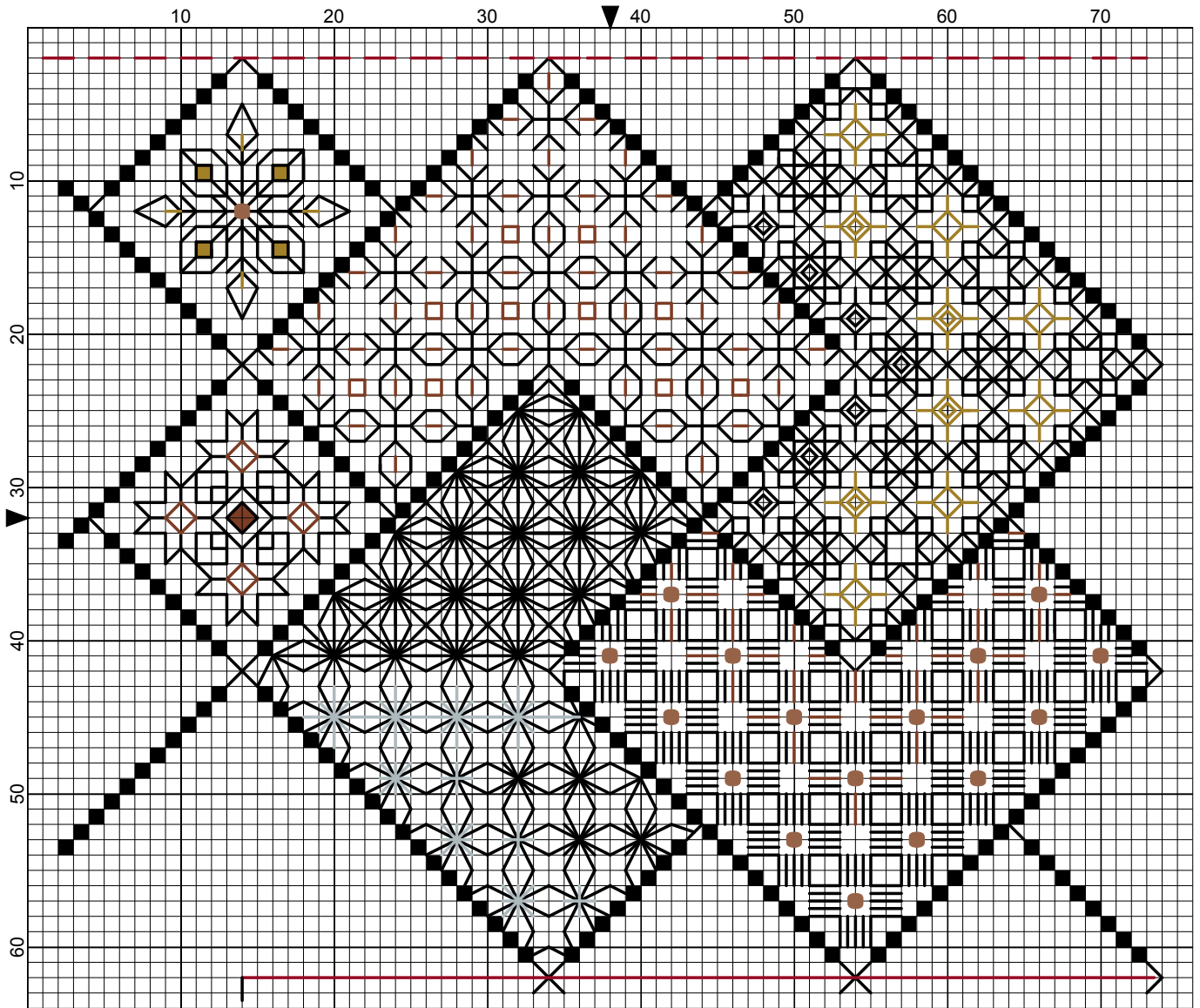
Embroidery



Full width of pattern



Save the Stitches Block 3 Patterns 11 - 16



Elizabeth Almond

Save the Stitches Block 3 Patterns 11 - 16

Author: Elizabeth Almond
Copyright: Elizabeth Almond
Grid Size: 76W x 64H
Design Area: 5.21" x 4.43" (73 x 62 stitches)

Legend:

■ [2] DMC-310 ANC-403 DLE- black

Call Outs:

■ [2] DLE-E3852 Dark Gold DMC Light Effects

■ [2] DLE-E301 Copper DMC Light Effects

Backstitch Lines:

— DMC-310 black
— DMC-816 garnet

— DLE-E3852 Dark Gold
— DLE-E301 Copper

— DLE-E415 Pewter

Beads:

● MHG-557 Mill Hill Glass Beads-Gold

Block 3 Patterns 11 - 16

Following on from Block 1 insert the next six patterns into the numbered areas.

Stitches:

Cross Stitch

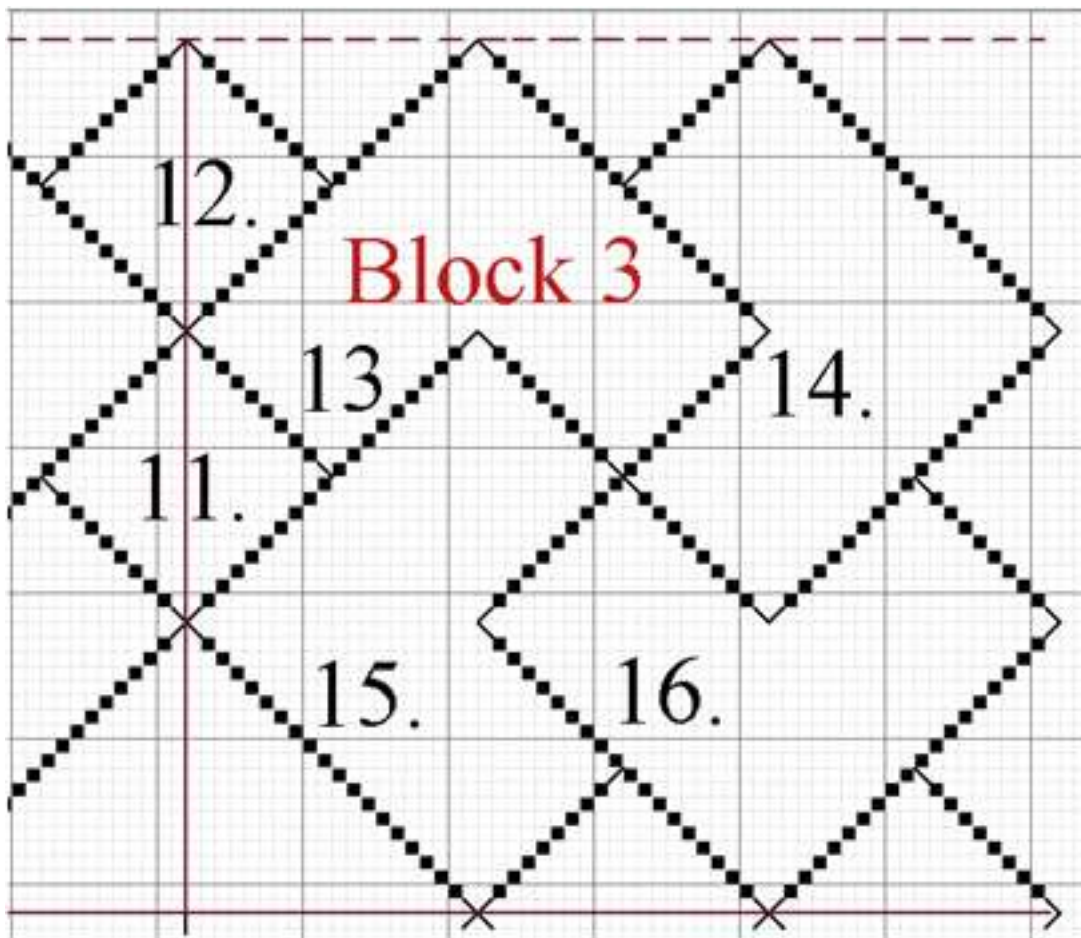
Back Stitch

"Call outs" are metallic cross stitch

Cross stitch is worked in either DMC Cotton Pèrlé, or

DMC 310 Black, TWO strands (Frame - cross stitch)

Diaper filling patterns are worked in ONE strand of DMC 310 unless otherwise stated.



HEADING

Placing the cross stitches:

a. long rows consist of 18 cross stitches b. short rows consist of eight cross stitches

